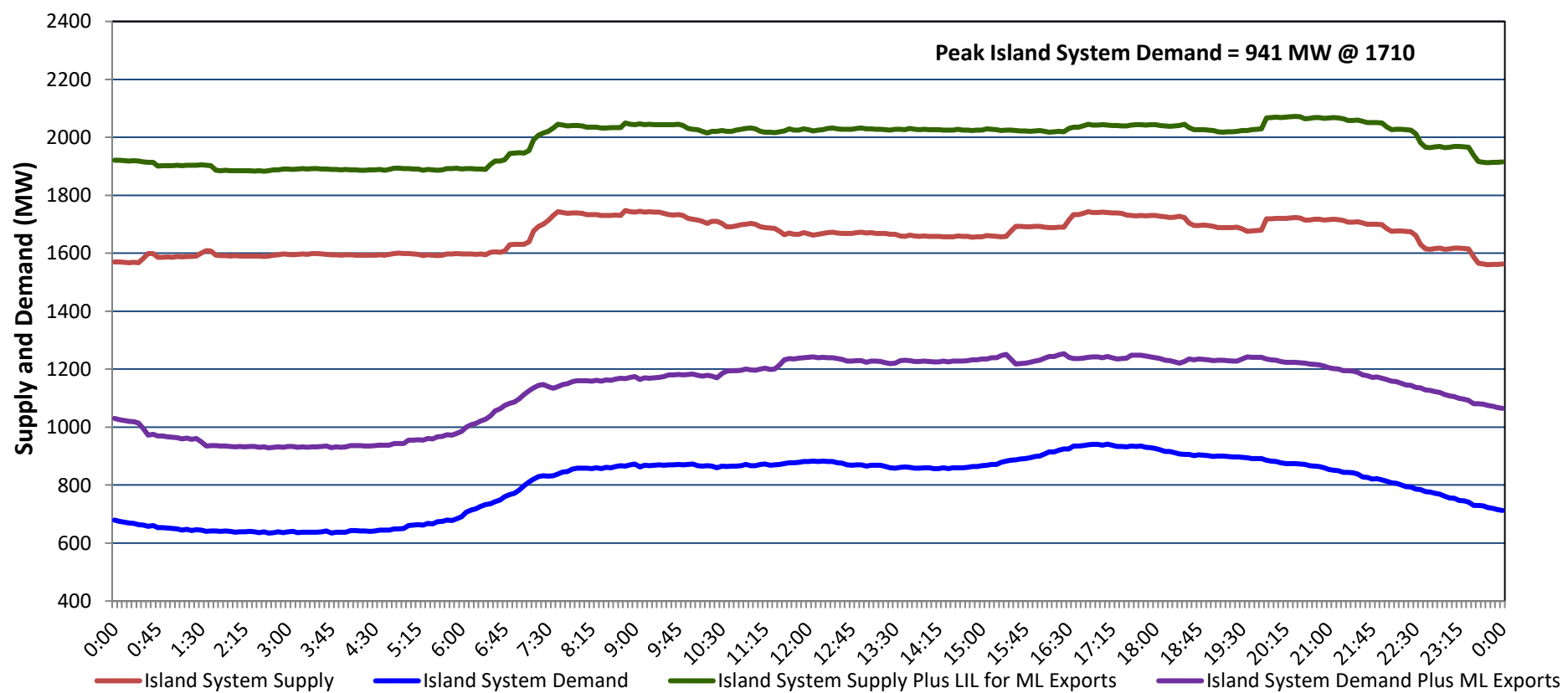


Newfoundland Labrador Hydro (NLH) Supply and Demand Status Report Filed Thursday, November 21, 2024

Section 1 Island Interconnected System - Supply, Demand & Exports Actual 24 Hour System Performance For Wednesday, November 20, 2024



Island Supply Notes For November 20, 2024 ¹

- A As of 0000 hours, October 20, 2024, Holyrood Unit 1 unavailable due to forced extension to planned outage (170 MW).
- B As of 0700 hours, November 10, 2024, Holyrood Gas Turbine unavailable due to planned outage (123.5 MW).
- C As of 1755 hours, November 17, 2024, Bay d'Espoir Unit 7 unavailable due to planned outage (154.4 MW).

Section 2 Island Interconnected System - Supply, Demand & Outlook

Thu, Nov 21, 2024	Island System Outlook ²	Seven-Day Forecast	Island System Daily Peak Demand (MW)	
			Forecast ⁸	Adjusted ⁶
Island System Supply: ⁴	1,769 MW	Thursday, November 21, 2024	1,015	945
NLH Island Generation: ^{3,7}	1,245 MW	Friday, November 22, 2024	995	915
NLH Island Power Purchases: ⁵	115 MW	Saturday, November 23, 2024	1,135	1,055
NP and CBPP Owned Generation:	205 MW	Sunday, November 24, 2024	1,075	995
LIL/ML Net Imports to Island: ⁹	204 MW	Monday, November 25, 2024	1,110	1,030
		Tuesday, November 26, 2024	1,115	1,035
7-Day Island Peak Demand Forecast:	1,145 MW	Wednesday, November 27, 2024	1,145	1,065

Island Supply Notes For November 21, 2024

- Notes:
1. Generation outages for running and corrective maintenance are included. These are not unusual for power system operations. They generally do not impact customer supply. Hydro schedules outages to system equipment whenever possible to coincide with periods when customer demands are low and sufficient supply reserves are available. However, from time to time equipment outages are necessary and reserves may be impacted.
 2. As of 0800 Hours.
 3. Gross continuous unit output.
 4. Gross output from all Island sources (including Note 4).
 5. NLH Island Power Purchases include: ML Imports, Exploits Generation, Rattle Brook, Star Lake, Wind Generation and capacity assistance (when applicable).
 6. Adjusted for interruptible load and the impact of voltage reduction when applicable.
 7. Due to limitations inherent in the design of combustion turbines, the output of combustion turbines may be reduced in the event that ambient temperatures exceed the threshold required for full rated output. This threshold is dependent on the design of each turbine.
 8. Does not include ML Exports.
 9. LIL Import sunk in the Island System. Actual LIL flows will be restricted by various system conditions including, but not limited to, Island Load, ML Exports and Avalon Unit status.

Section 3 Island Peak Demand and Exports Information Previous Day Actual Peak and Current Day Forecast Peak

Wed, Nov 20, 2024	Island Peak Demand ¹⁰	17:10	941 MW
	Exports at Peak		302 MW
	LIL Net Imports to Island		4,233 MWh
Thu, Nov 21, 2024	Forecast Island Peak Demand		1,015 MW

- Notes: 10. Island Demand is supplied by NLH generation and purchases, LIL Imports plus generation owned and operated by Newfoundland Power and Corner Brook Pulp & Paper (Deer Lake Power, DLP).